



## Instructions

The model for Endless Dream is stitched over 1 on 25ct; Linen or Evenweave may be used. You may use 1 or 2 strands of floss depending on your preference.

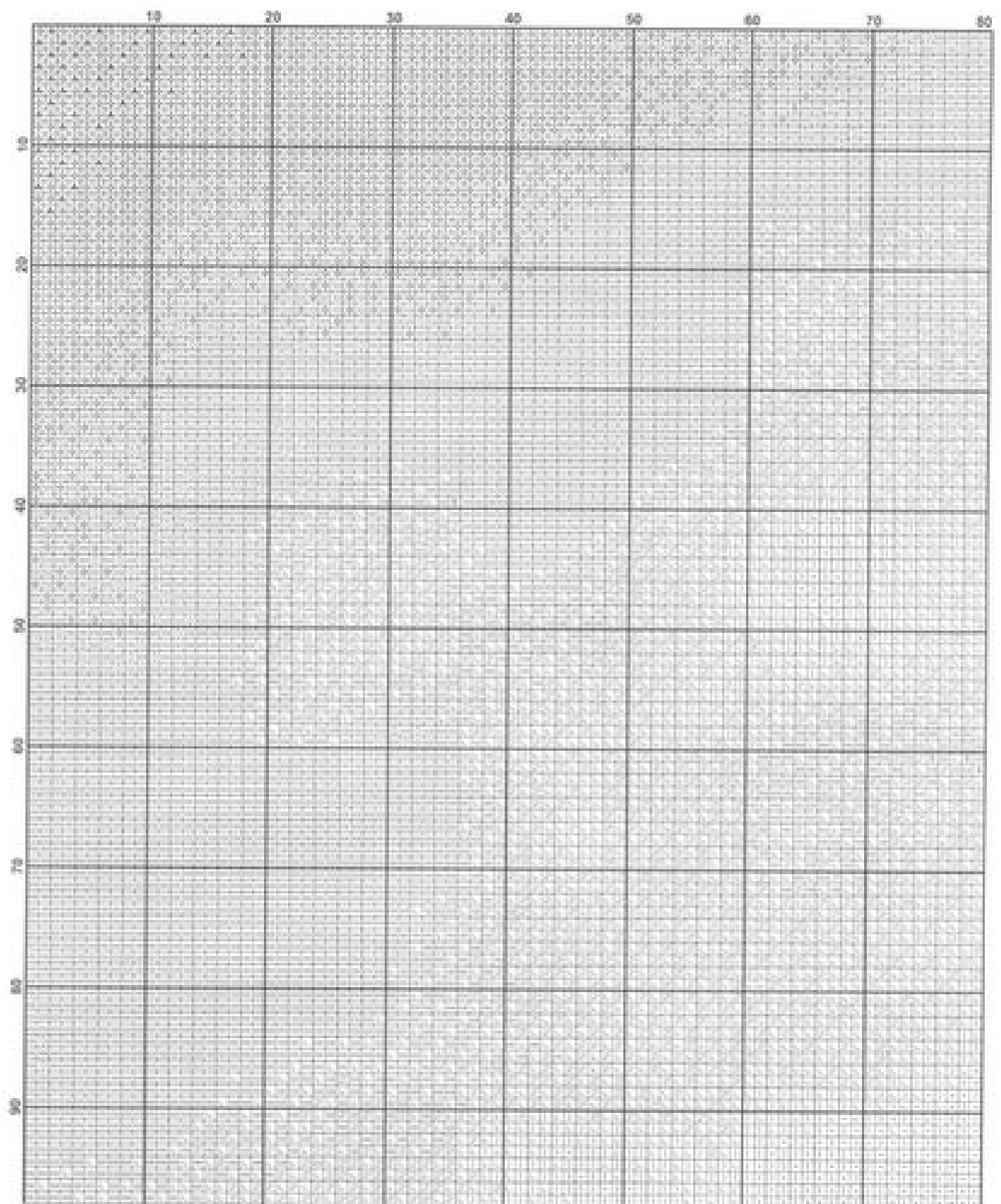
It is recommended that you make working copies and enlarge to view detail and symbols.

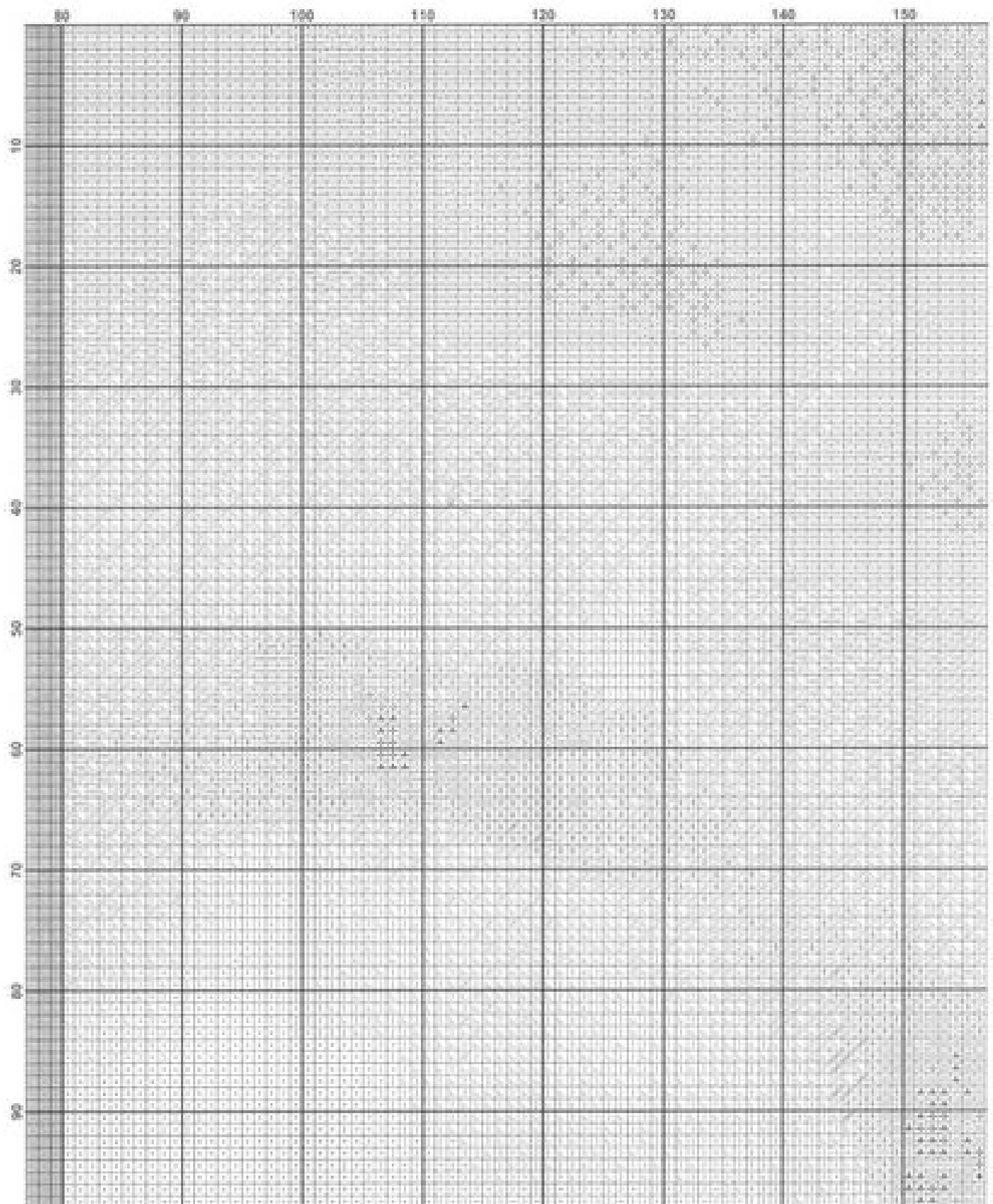
We also suggest using a #28 needle when working over 1 on 25ct.

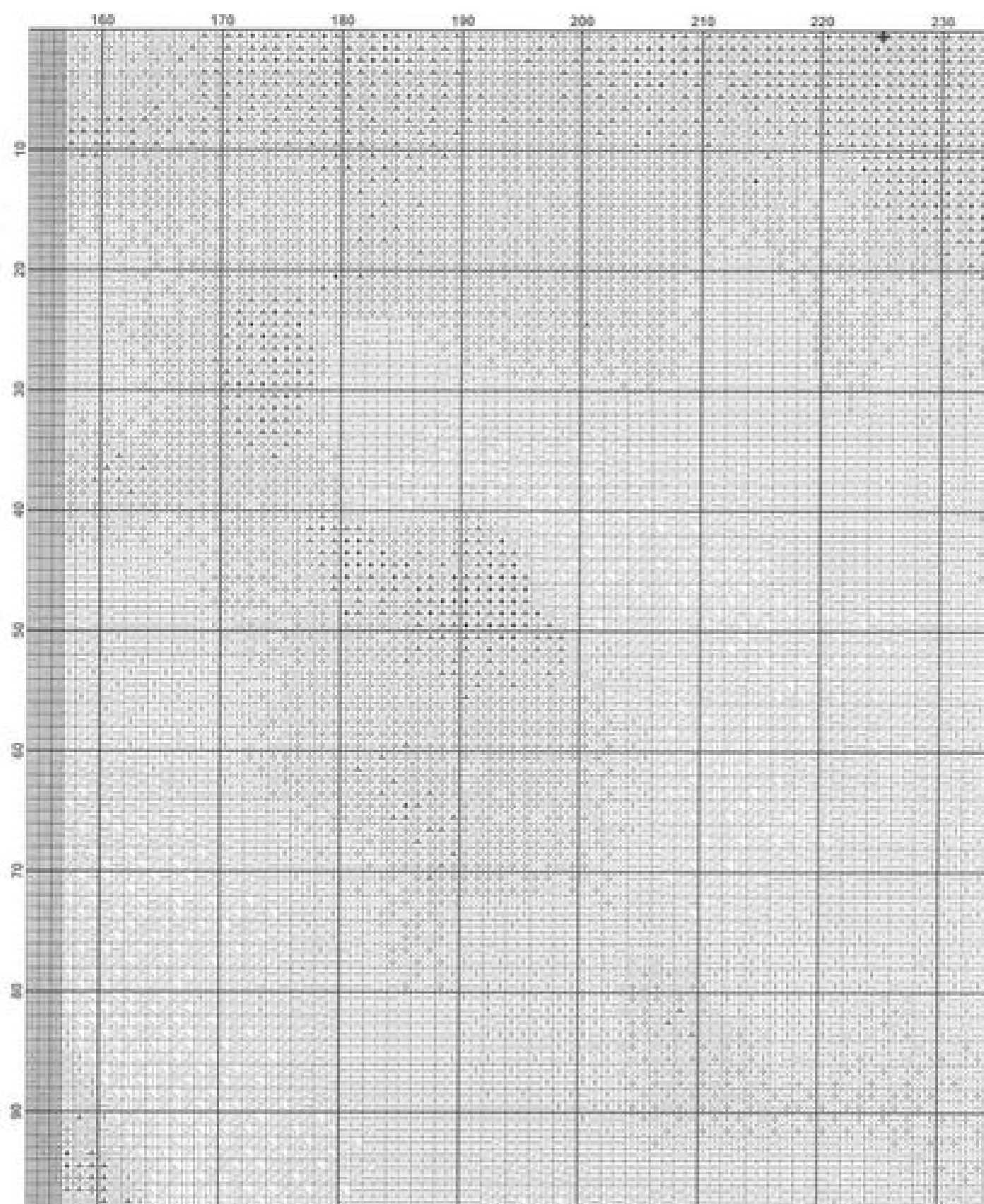
This is a large project that will offer many hours of stitching pleasure.

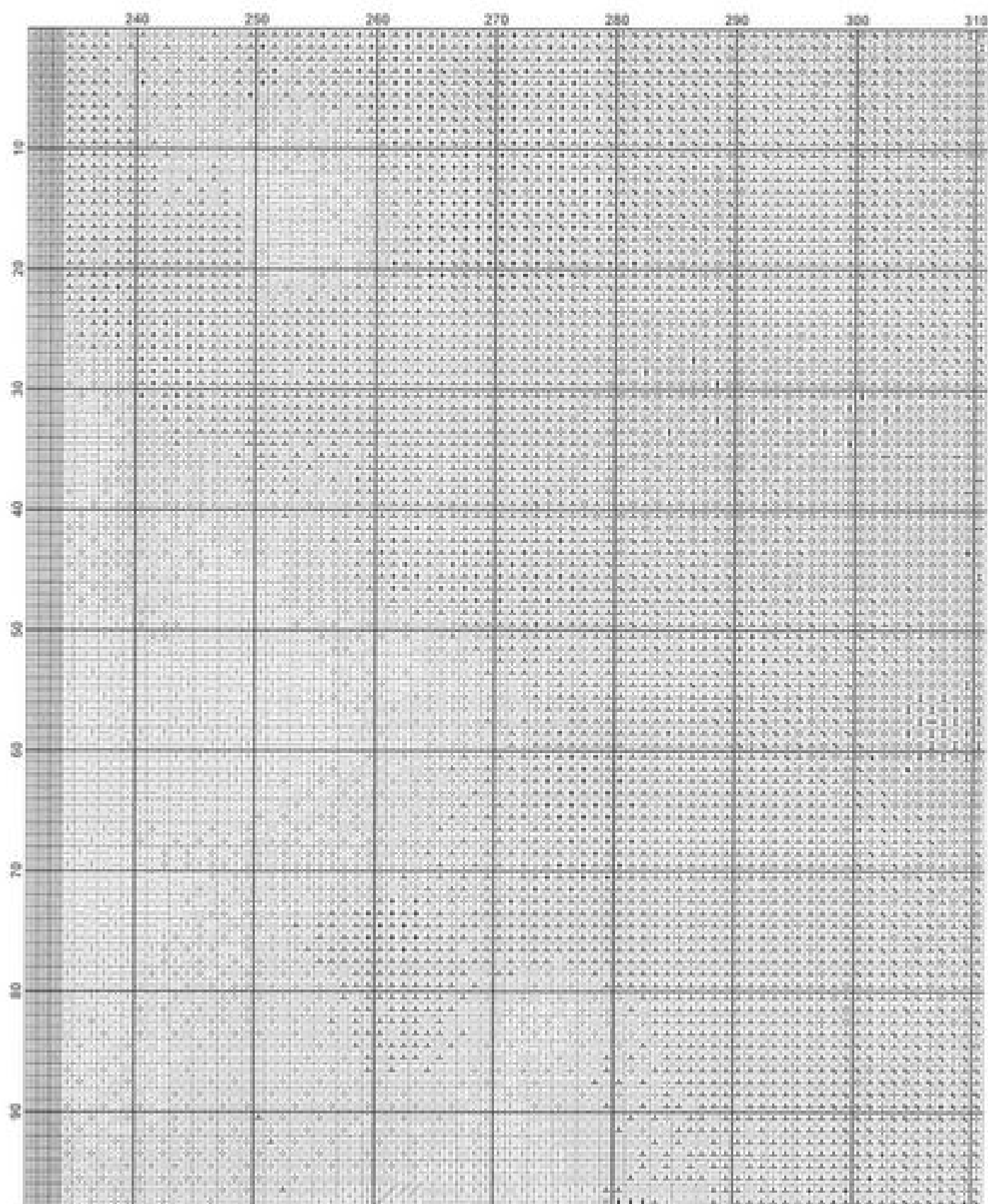
We thank you for purchasing this design and welcome any questions or comments

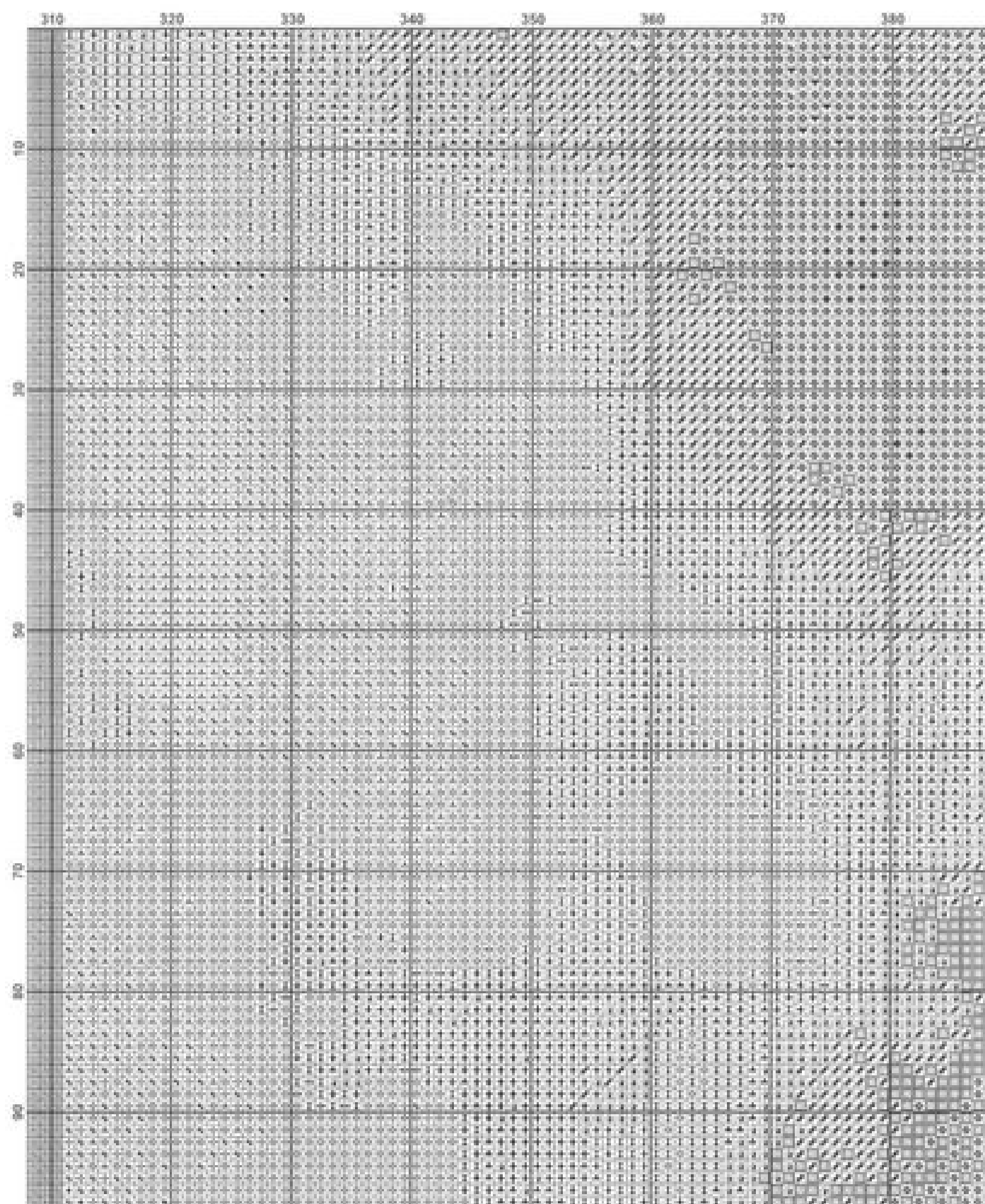
That you may have.

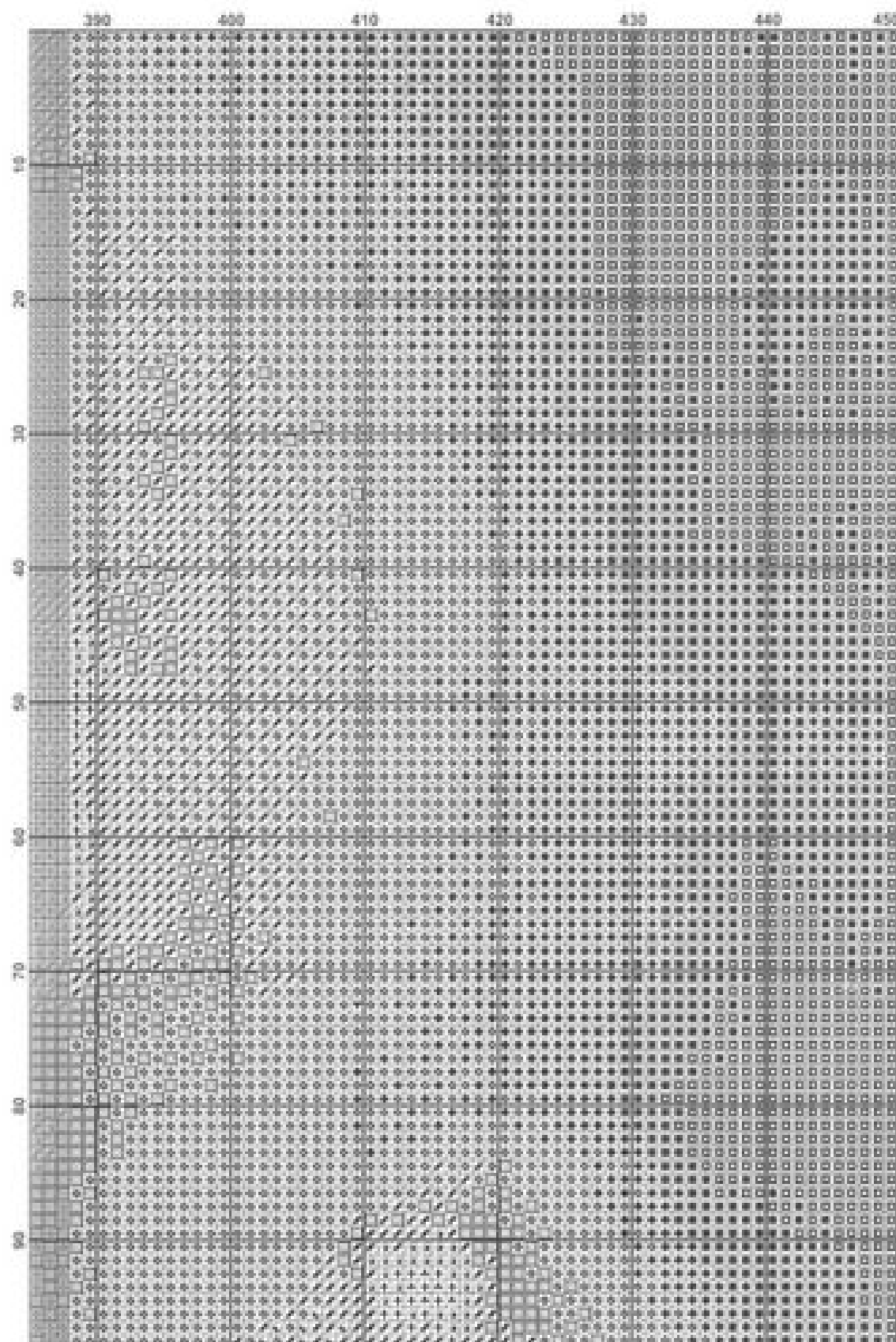




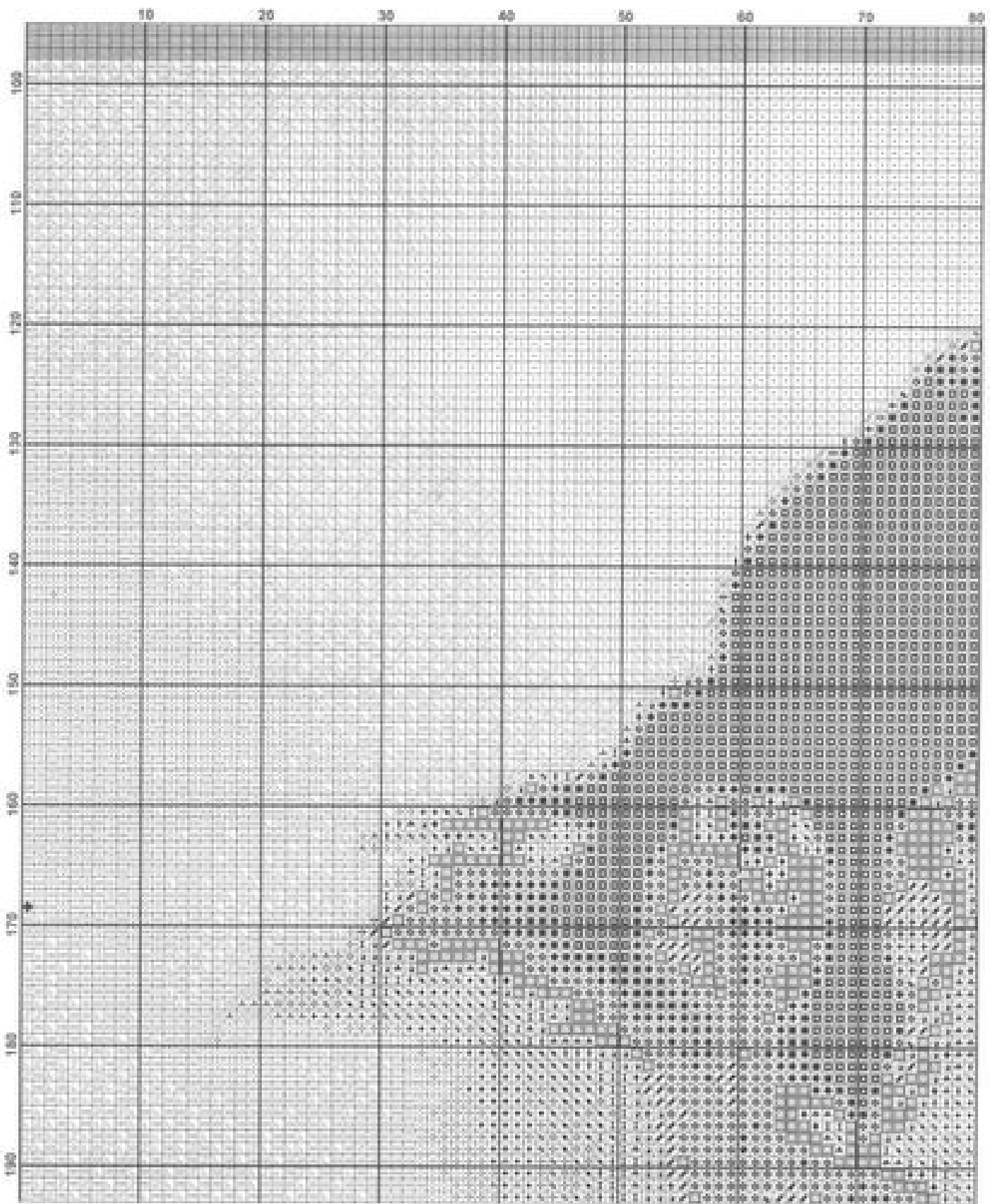


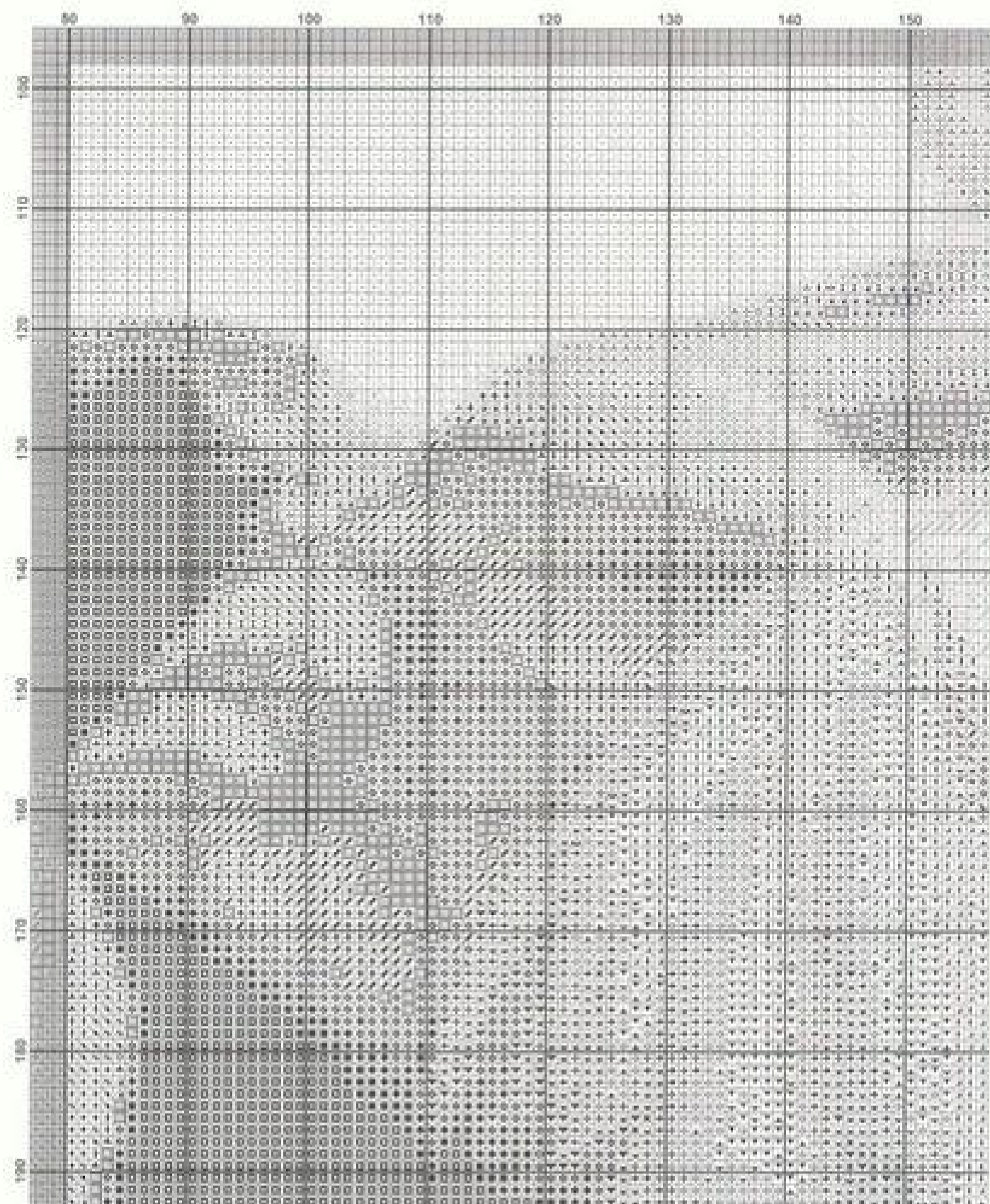


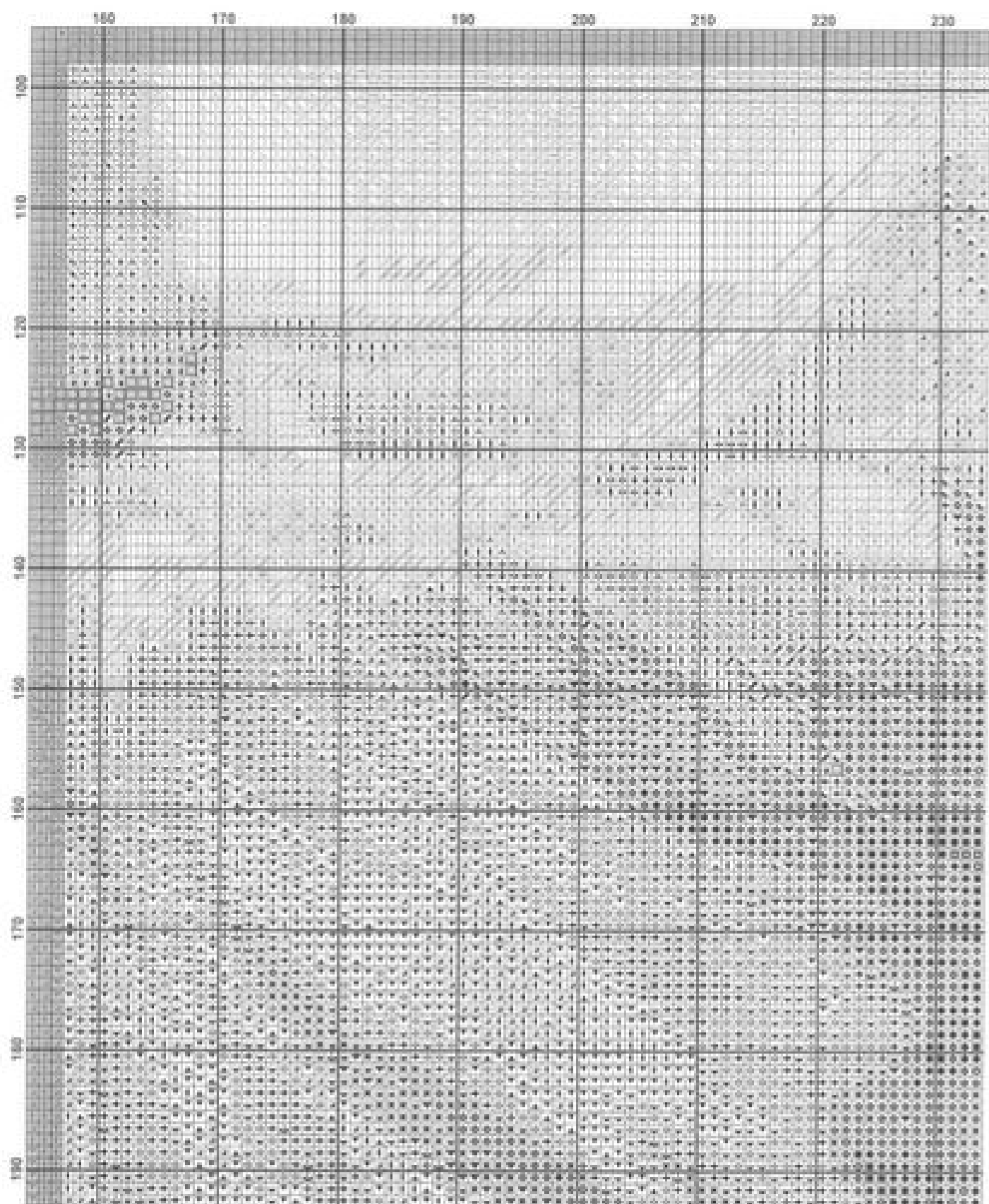


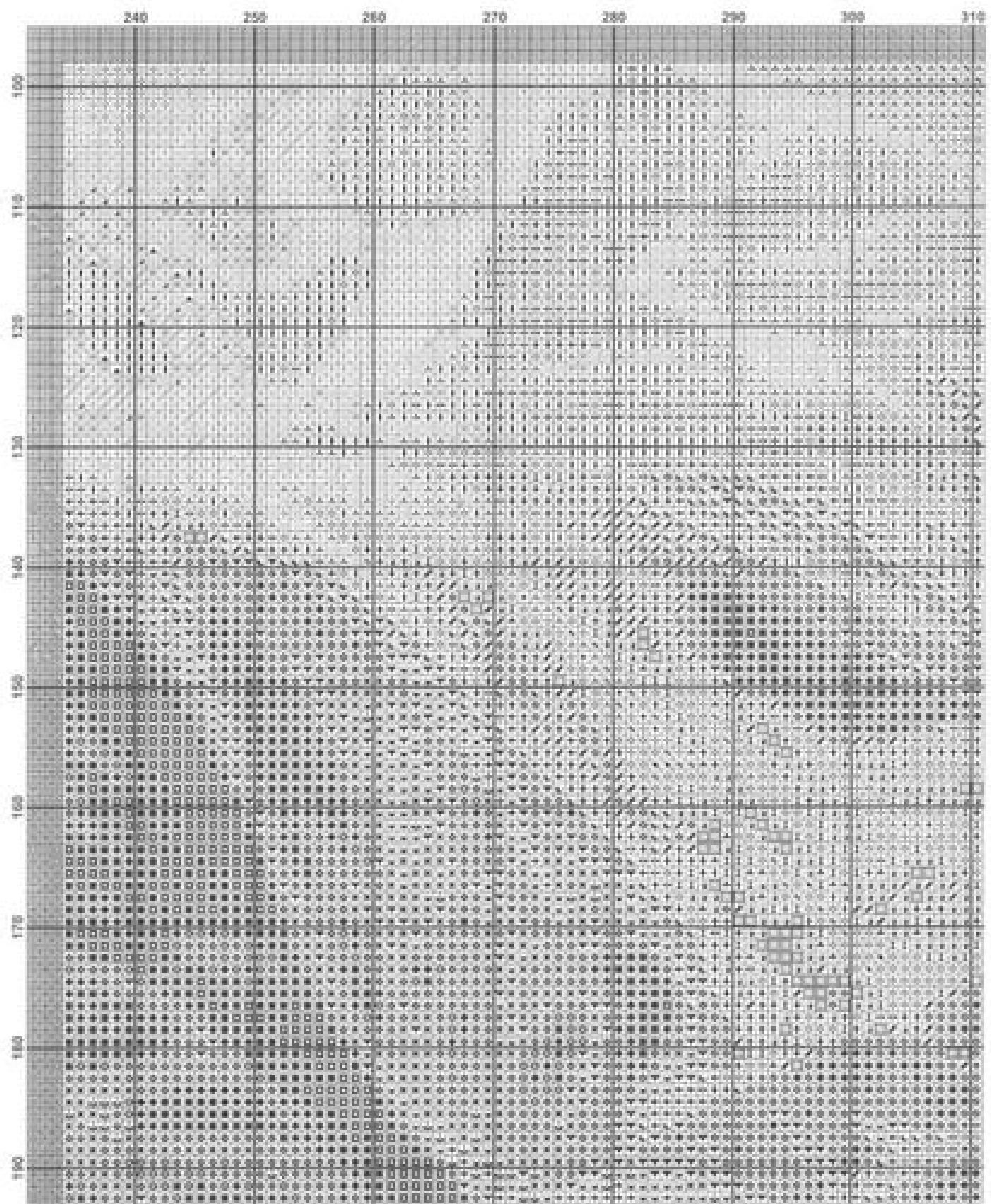


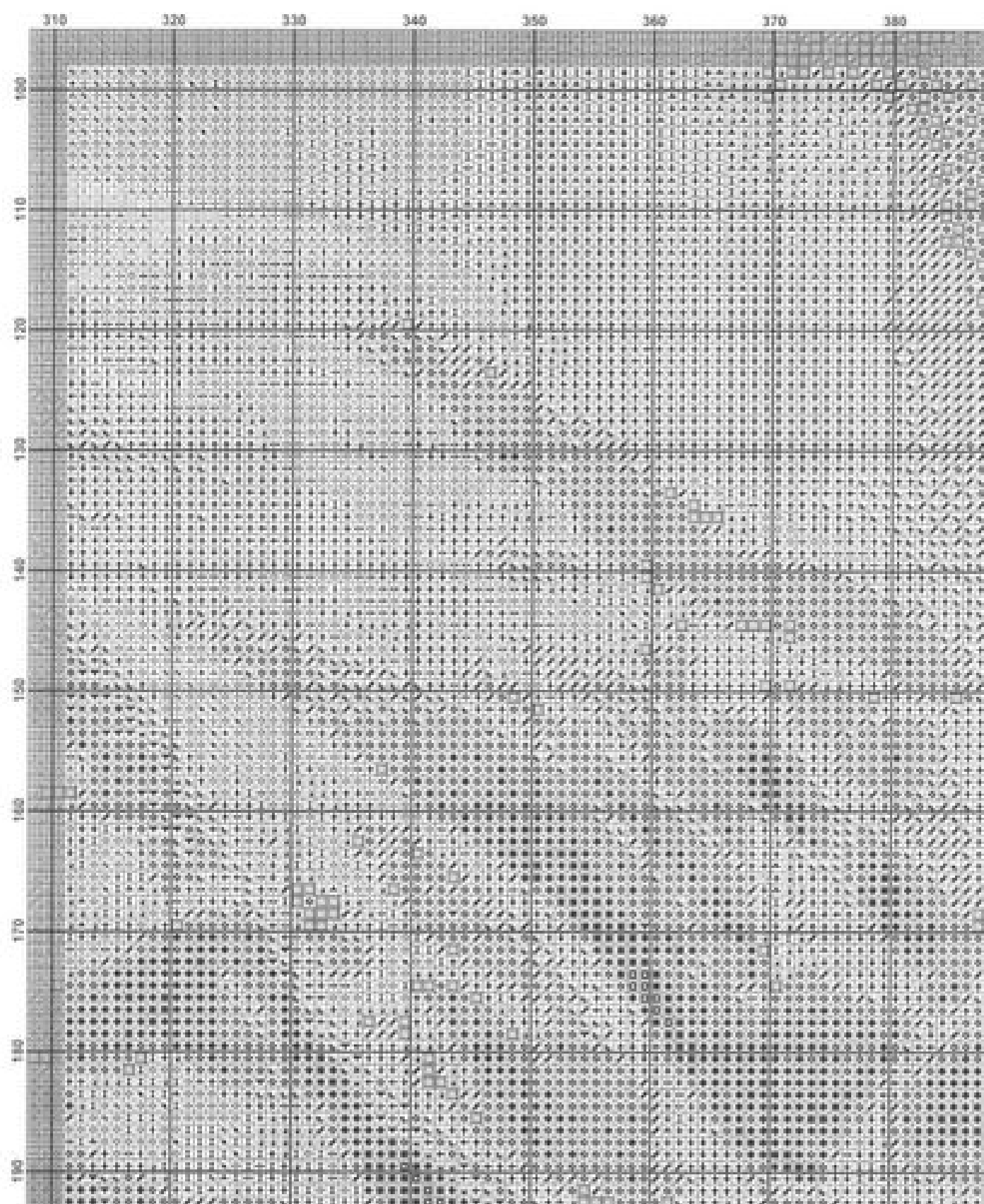


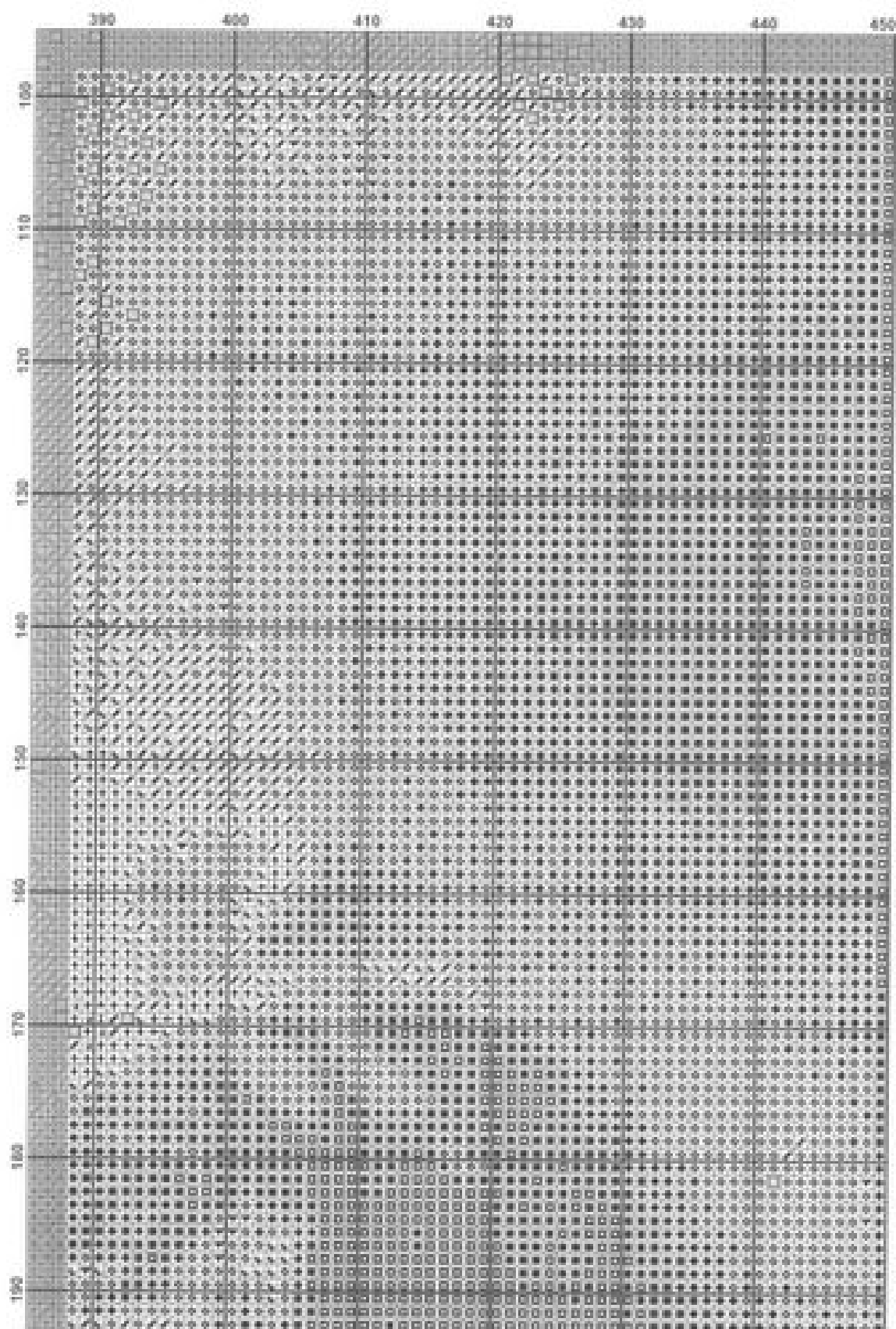


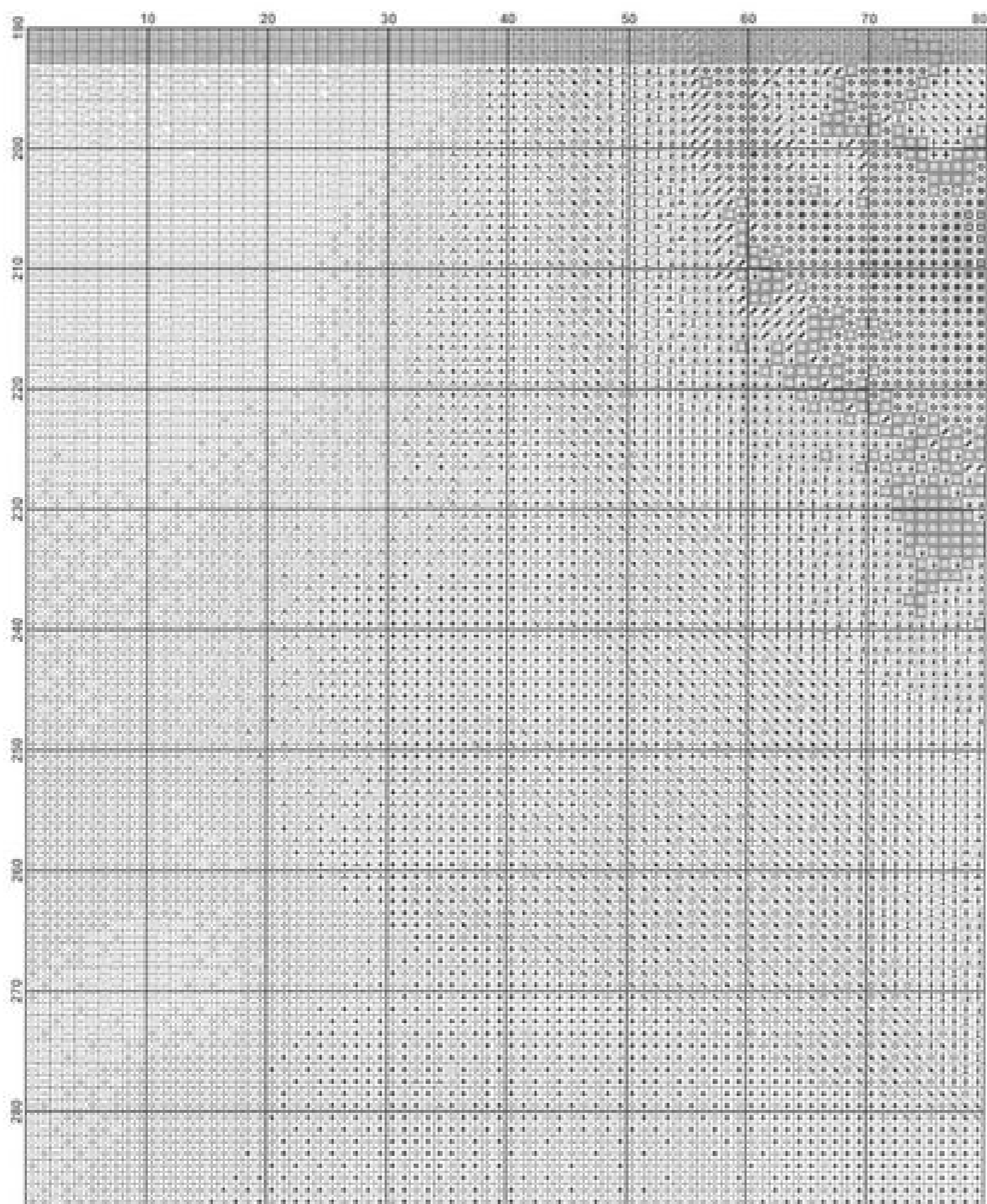


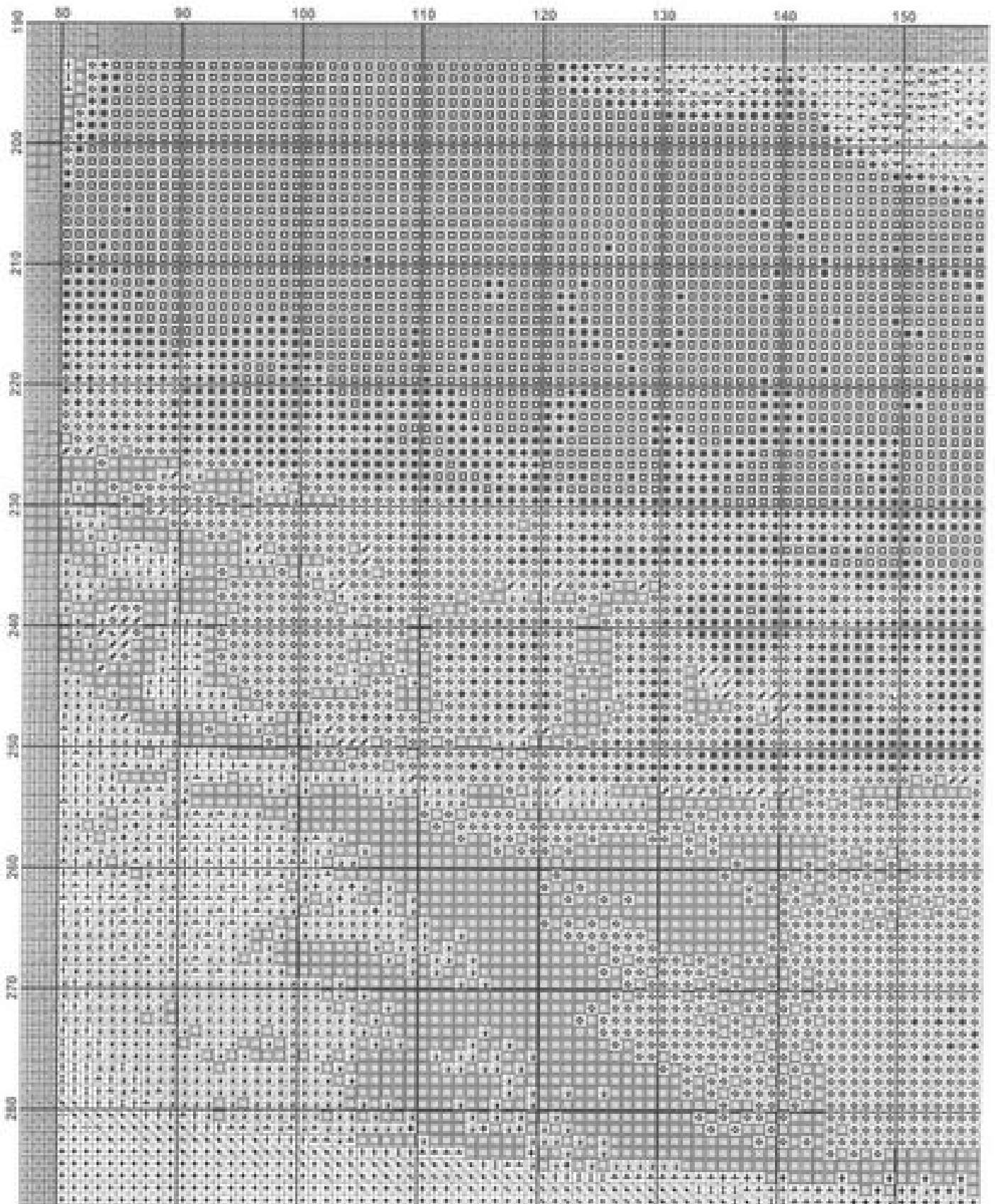




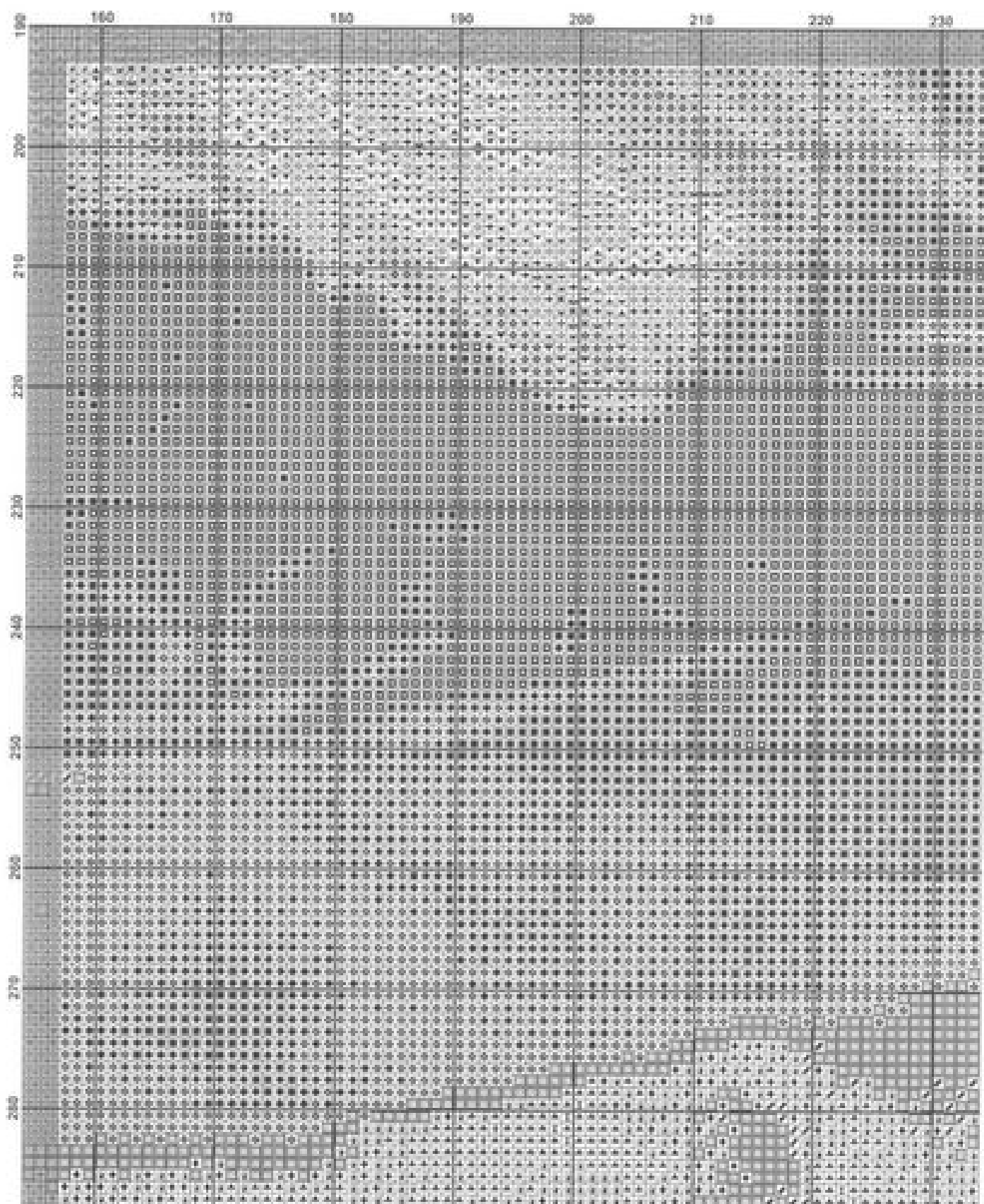


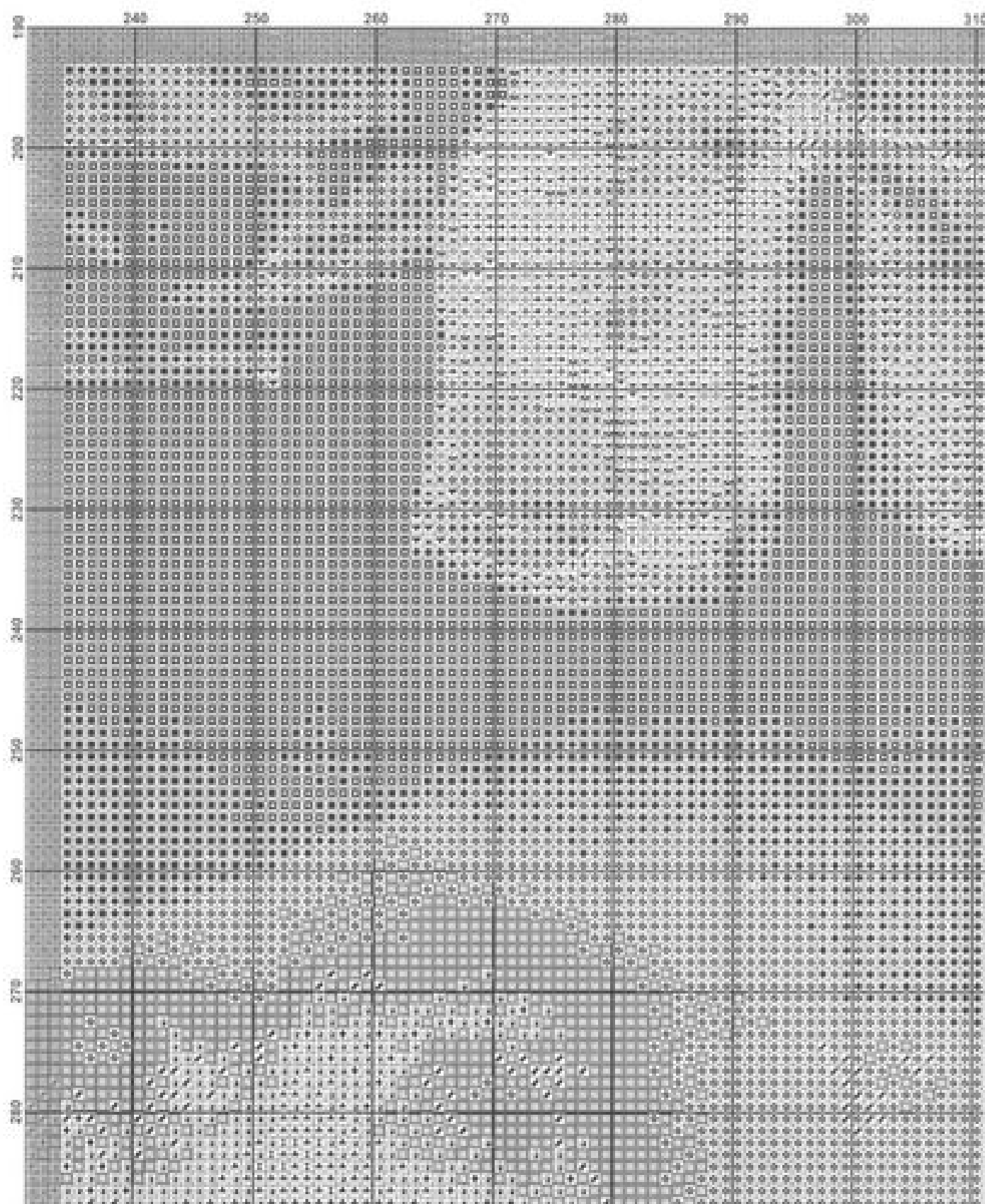




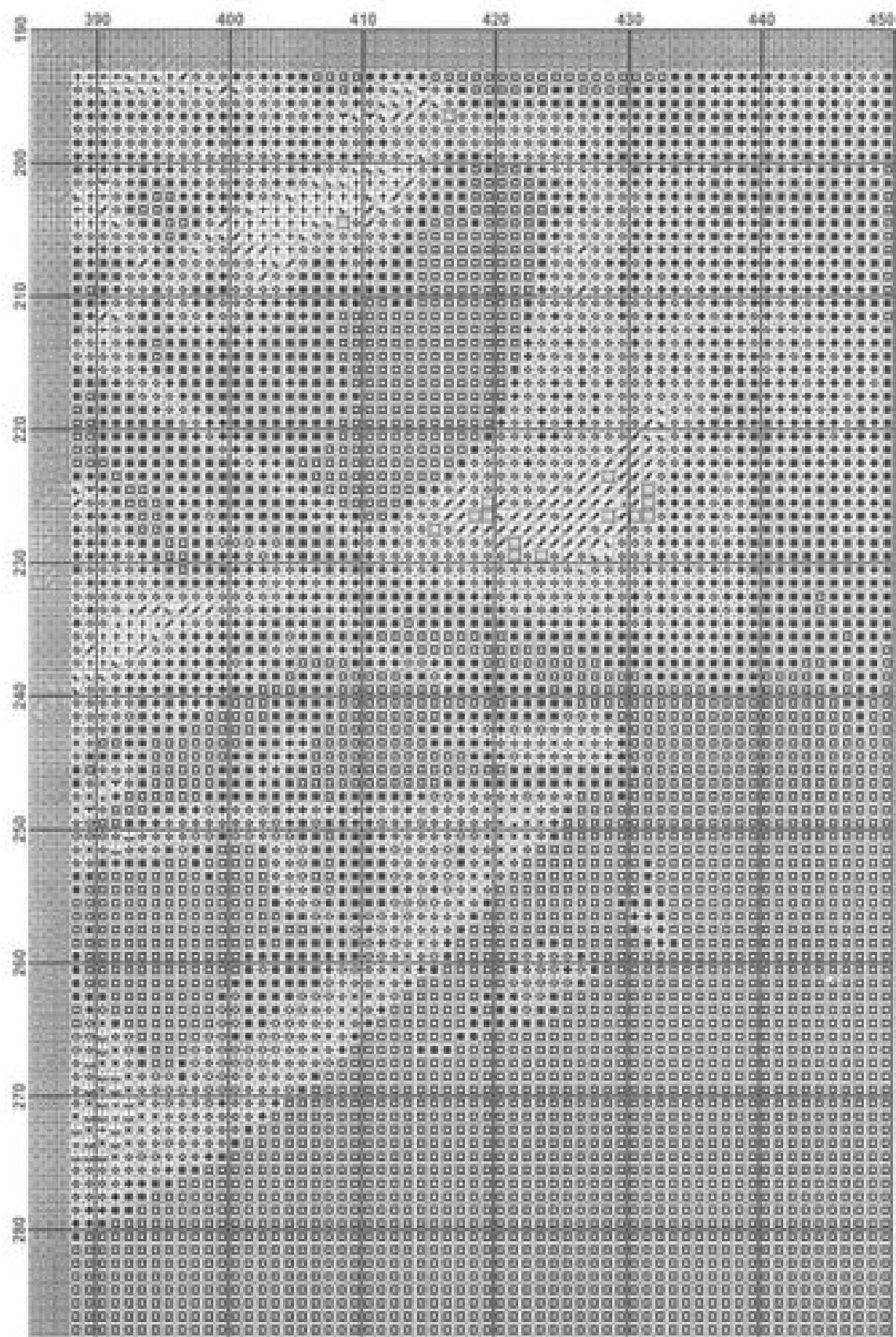


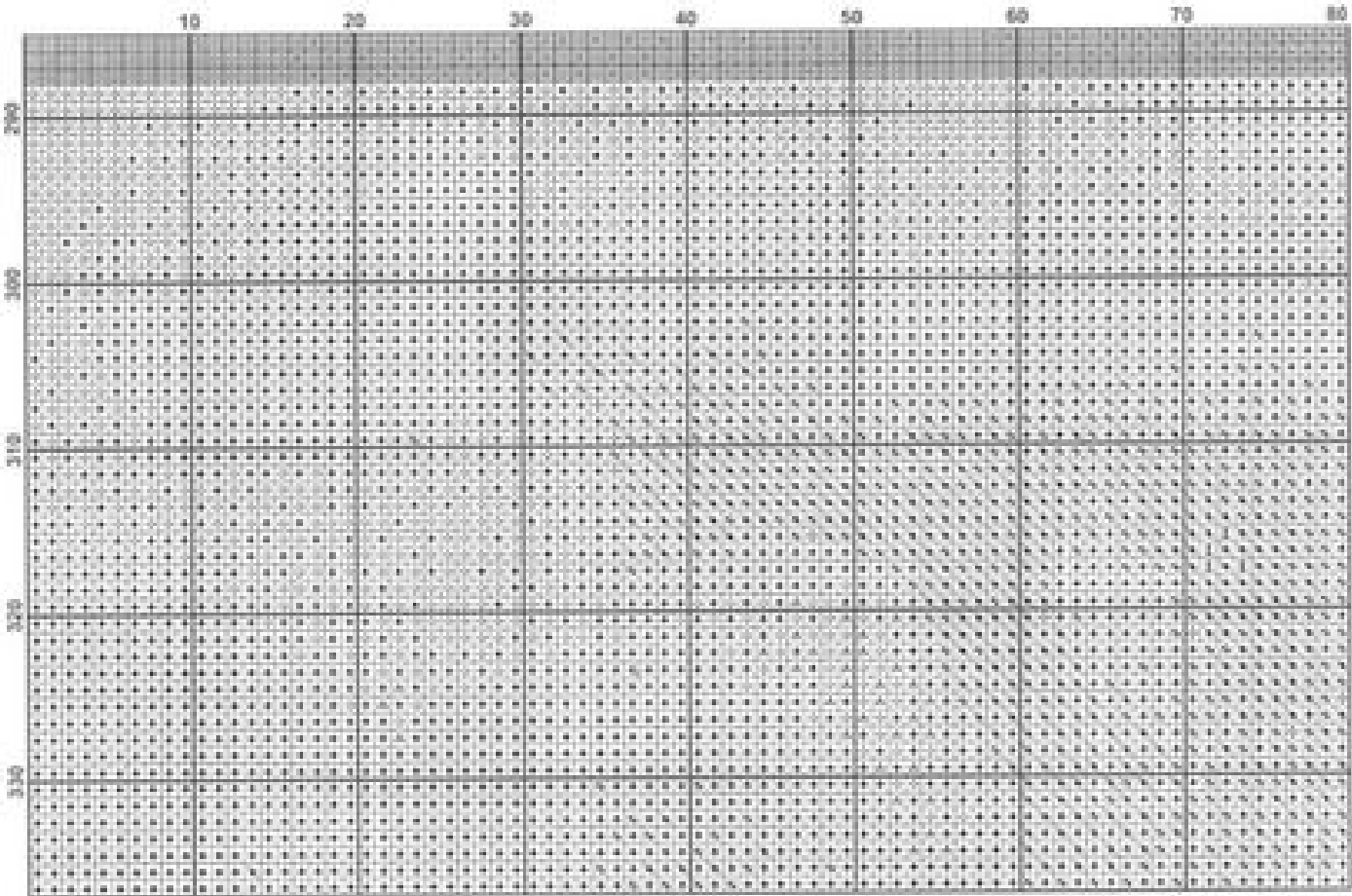


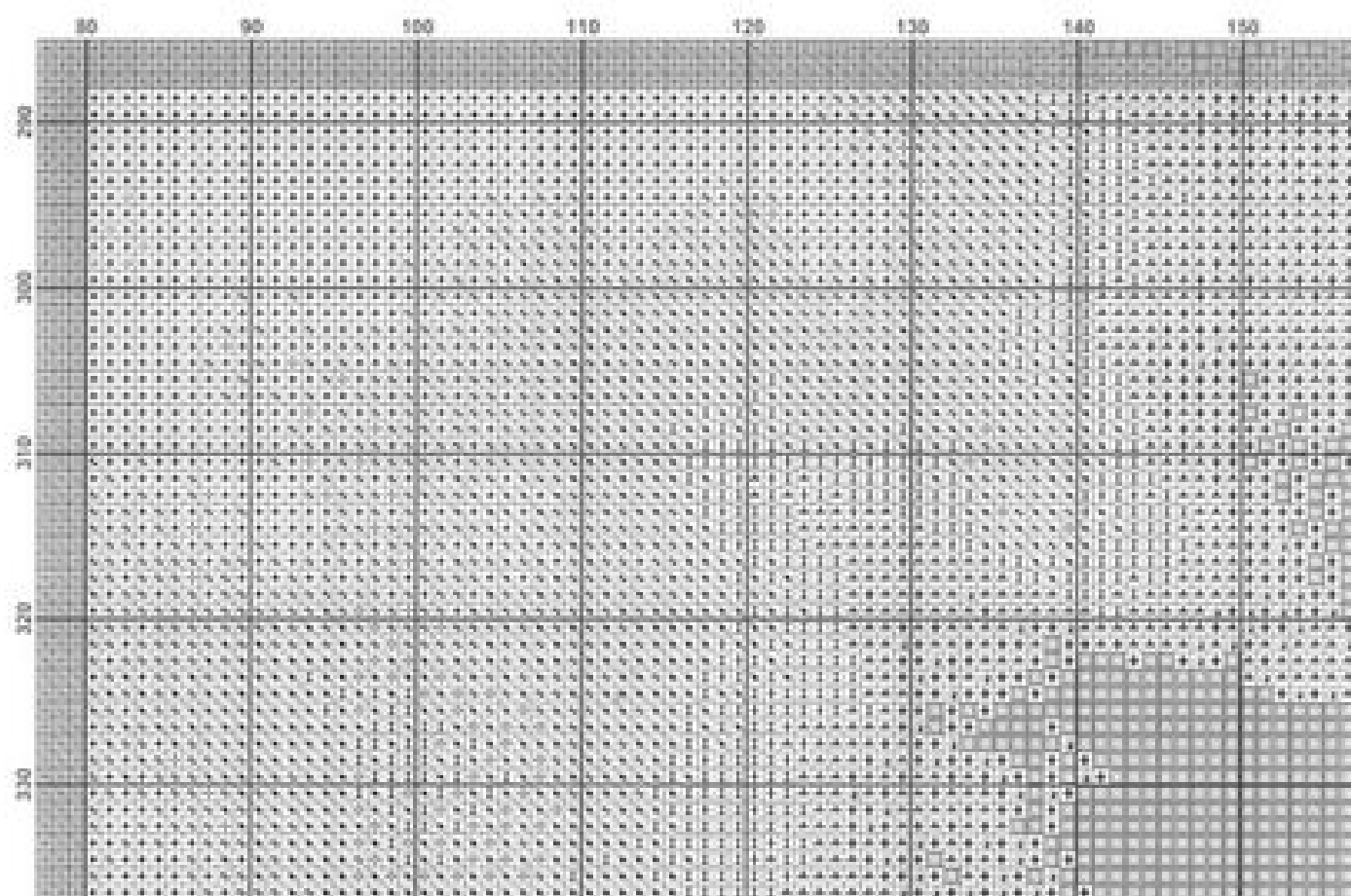


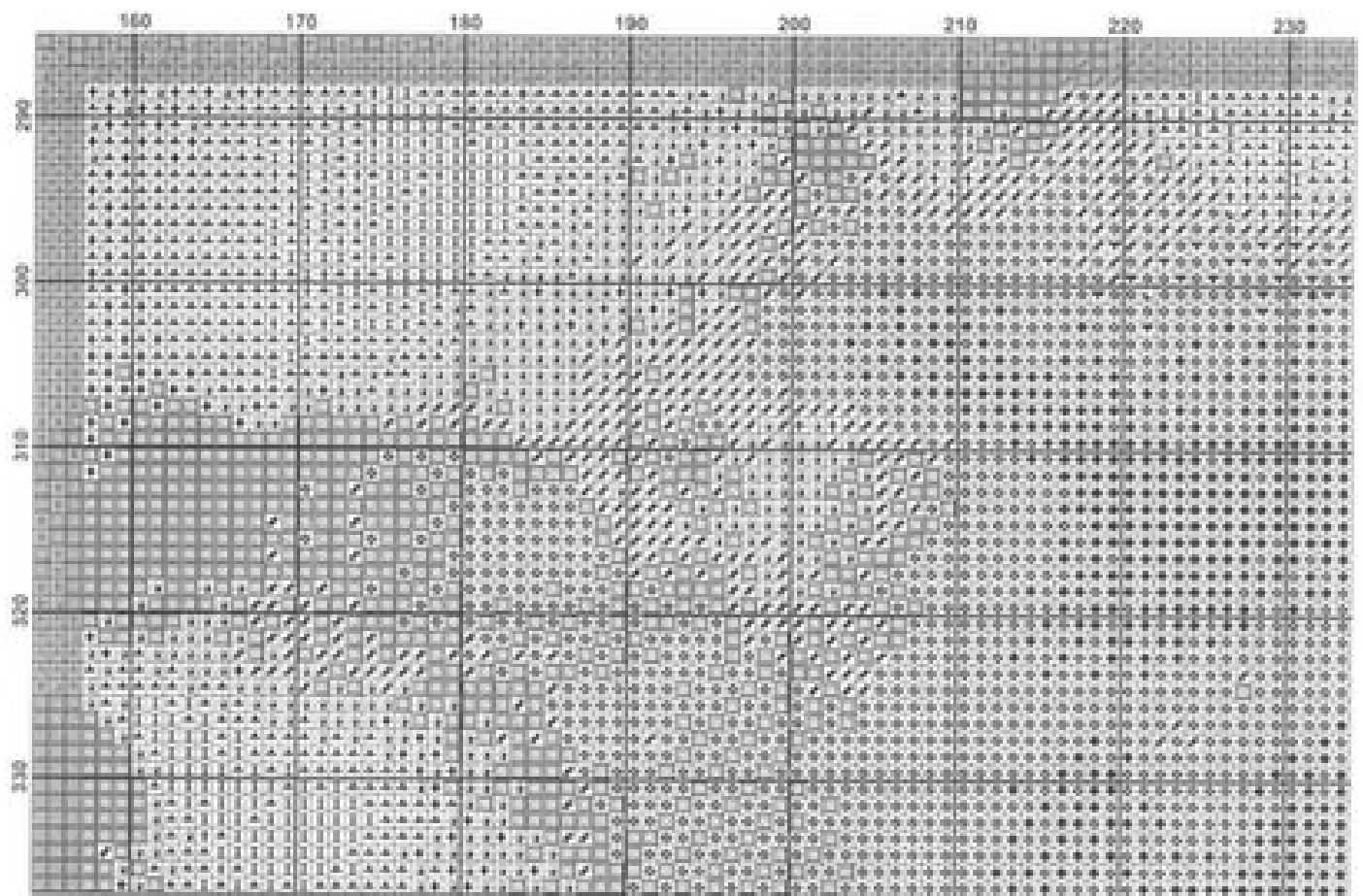


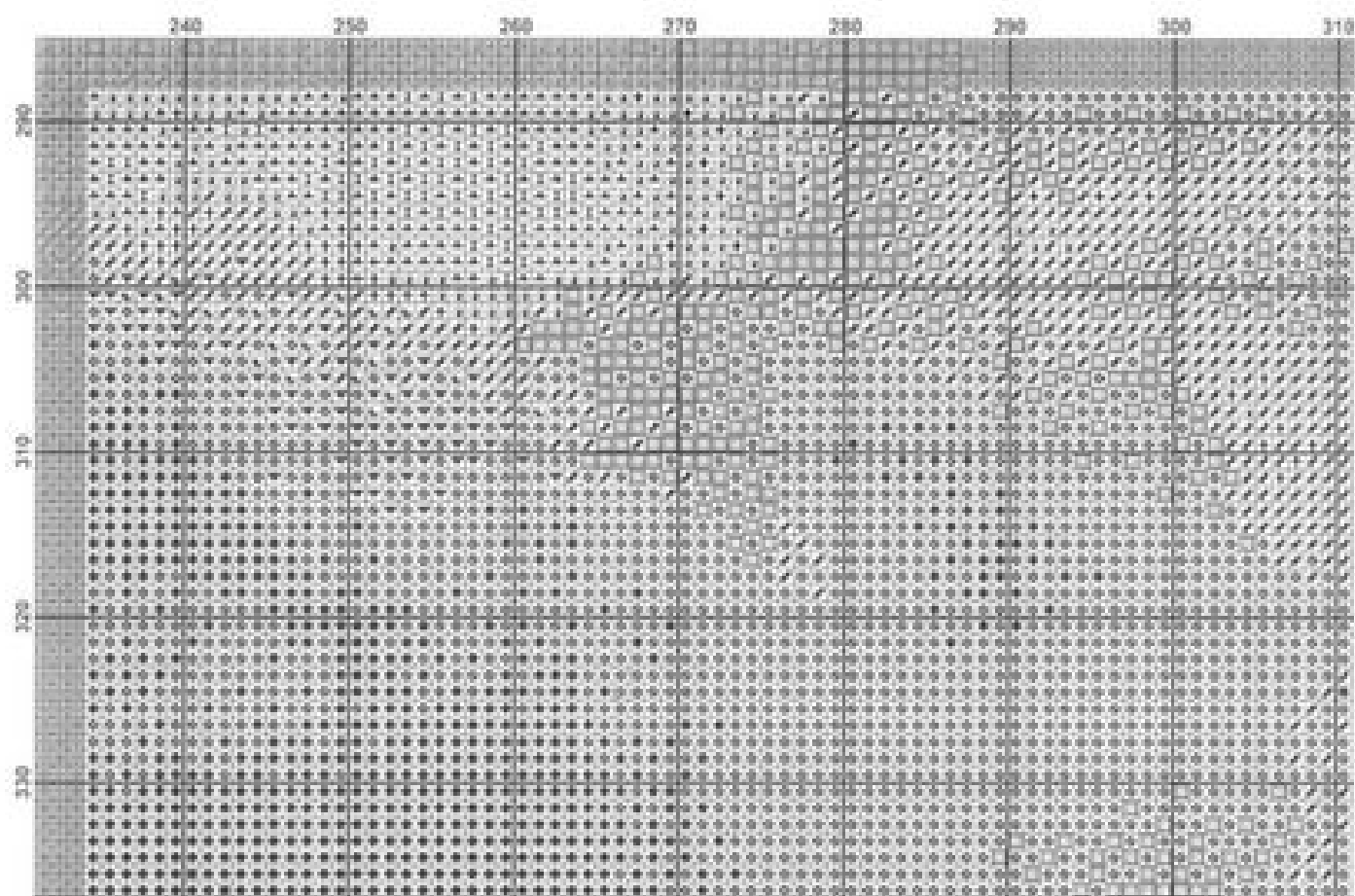




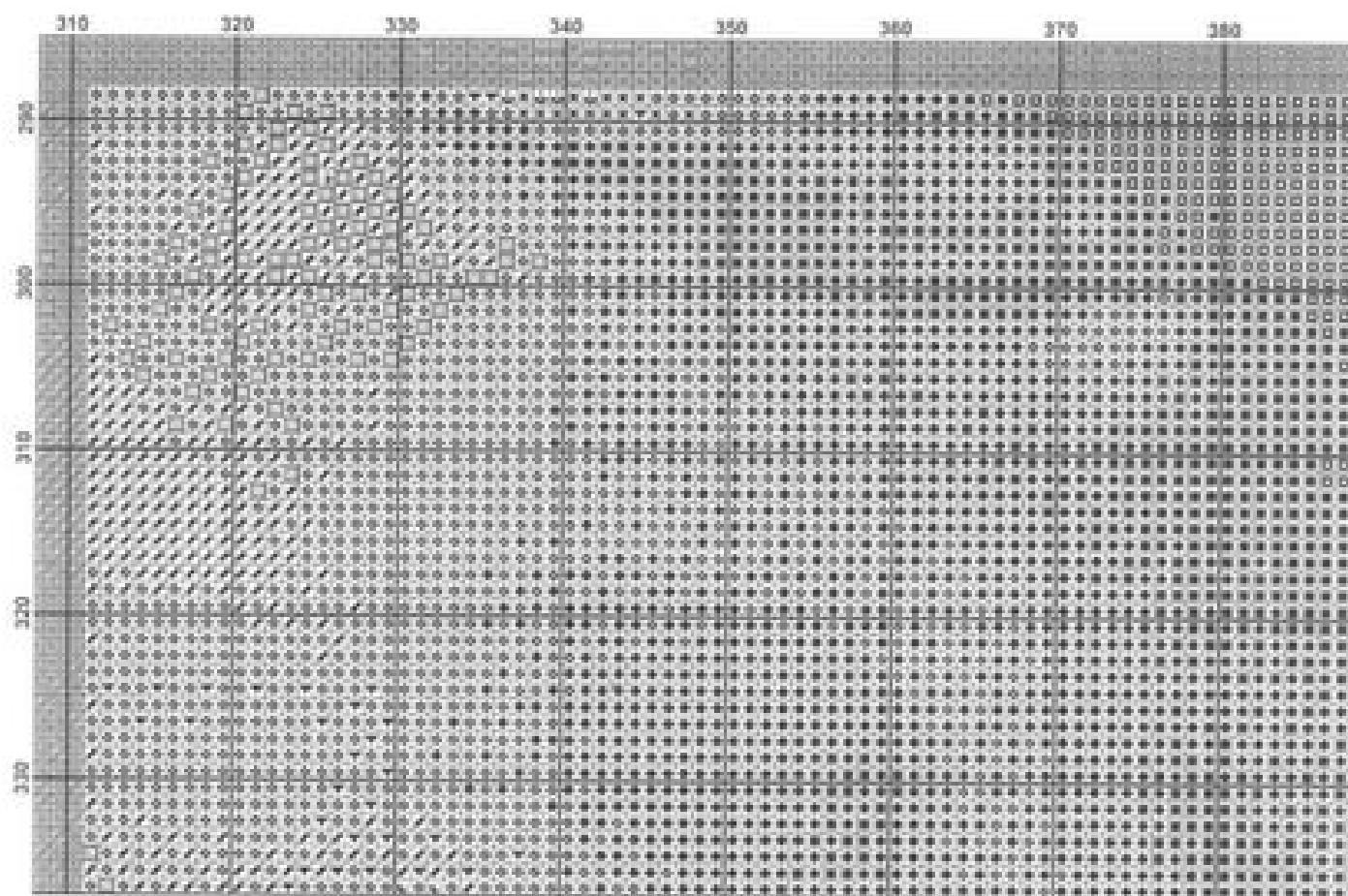


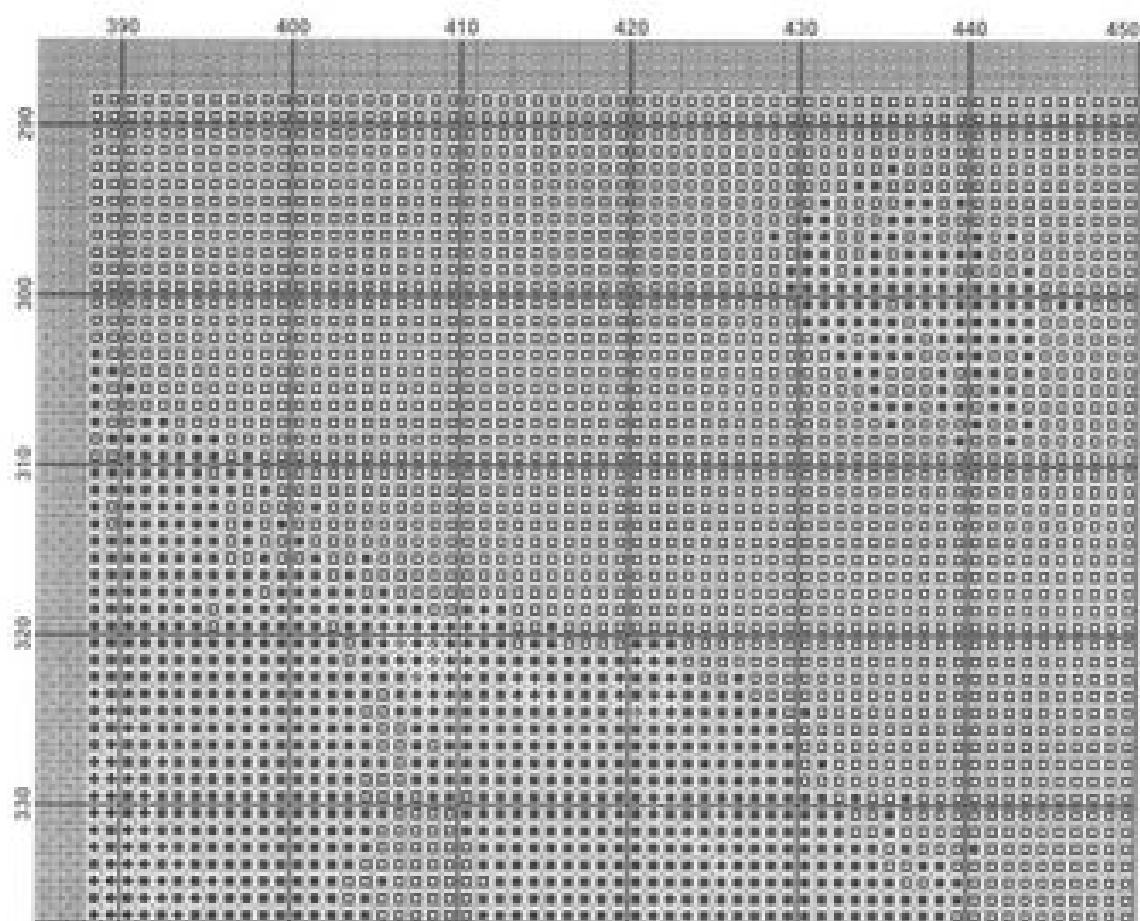












Pattern Name: Endless Dream - Vacher  
 Designed By: Michele Sugetta  
 Company: Heaven and Earth Designs  
 Copyright: 2009  
 Fabric: Linen or Evenweave 25, White  
 450w X 557h Stitches  
 Size: 25 Count, 18w X 15.5/38in

## Flora Used for Pull Stitches

Symbol	Strands	Type	Number	Color
■ ⊕	2	DMC	167	Yellow Beige-VY DK
■ ▼	2	DMC	169	Pewter-LT
■ ○	2	DMC	300	Mahogany-VY DK
■ ▲	2	DMC	301	Mahogany-MD
■ □	2	DMC	310	Black
■ ■	2	DMC	313	Steel Gray-LT
■ ■	2	DMC	372	Mantish-LT
■ ■	2	DMC	400	Mahogany-DK
■ ⊕	2	DMC	413	Pewter Gray-DK
■ ⊖	2	DMC	414	Steel Gray-DK
■ ⊕	2	DMC	420	Hazelnut Brown-DK
■ =	2	DMC	422	Hazelnut Brown-LT
■ ⊕	2	DMC	434	Brown-LT
■ ⊗	2	DMC	435	Brown-VY LT
■ &	2	DMC	436	Tan
■ ■	2	DMC	612	Drift Brown-LT
■ ⊕	2	DMC	645	Beaver Gray-VY DK
■ ⊖	2	DMC	646	Beaver Gray-DK
■ ⊕	2	DMC	647	Beaver Gray-MD
■ ○	2	DMC	676	Old Gold-LT
■ ■	2	DMC	758	Tan-VY LT
□ ⊕	2	DMC	745	Yellow-LT Pale
■ ♥	2	DMC	779	Cocoa-DK
■ ■	2	DMC	780	Topaz-LIL VY DK
■ ⊕	2	DMC	782	Topaz-DK
■ ⊕	2	DMC	833	Golden Olive-LT
■ #	2	DMC	842	Beige Brown-VY LT
■ ×	2	DMC	844	Beaver Brown-LIL DK
■ ⊕	2	DMC	869	Hazelnut Brown-VY DK
■ ●	2	DMC	902	Garnet-VY DK
■ ⊕	2	DMC	919	Red Copper
■ ○	2	DMC	934	Black Avocado Green

Symbol	Strands	Type	Number	Color
■ ●	2	DMC	939	Coffee Brown-LIL DK
■ 2	1	DMC	949	Tawny
■ 1	2	DMC	951	Tawny-LT
■ 7	2	DMC	979	Golden Brown-DK
■ 8	2	DMC	976	Golden Brown-MD
■ 4	2	DMC	977	Golden Brown-LT
■ 6	2	DMC	981	Brown Gray-VY DK
■ 5	2	DMC	981	Mocha Brown-VY DK
■ 9	2	DMC	987	Black Brown
■ 8	2	DMC	977	Mahogany-LT
■ 6	2	DMC	987	Brown Gray-DK
■ 1	2	DMC	983	Yellow-LIL Pale
■ 2	2	DMC	986	Golden Brown
■ 5	2	DMC	982	Golden Brown-Pale
■ 6	2	DMC	986	Mahogany-LIL VY LT
■ 4	2	DMC	980	Cocoa
■ 3	2	DMC	986	Cocoa-LT
■ 4	2	DMC	982	Mocha Beige-DK